

DAVID MODEL SENIOR SECONDARY SCHOOL

Main Road Tukmirpur

SUMMER HOLIDAY HOMEWORK (2024 – 2025)

CLASS – X

(Summer Holiday Homework –To be recorded as Multiple Assessment & Portfolio of IA in 2024-2025)

ENGLISH

PORTFOLIO:

(A) TOPIC : ENGLISH PROJECT

You are required to prepare a project on the topic:

"William Shakespeare"

You may include the following aspects:

- Early Life
- career
- contribution in Poetry
- Achievements and awards.

PLEASE NOTE:

- That the write up should not exceed three pages of A4 size sheet.
- Cover page must clearly show the heading portfolio-1, Name of the student, Class, Section and Name of the writer. All the other pages must bear student's name, class and section at the top.it is mandatory.
- Submit it to your respective English Teacher after the summer Break.

Assessment Rubrics:

NO	Aspects	Marks
1.	Content-	04
2.	Fluency/Grammatical Accuracy-	03
3.	Creativity-	01
4.	Neatness/Punctuality in Submission-	02

- Write 10 proverbs with their meanings. Use each of them in a sentence on A4 size sheet.
- Select 25 new words from the newspaper. Write down 2 Antonyms and 2 Synonyms of each word
- On A4 size sheet.

(B) READ DRAMA:

" Julius Caesar " and prepare a Book review. Kindly follow the given order.

- Cover page
- About the Author (150 words)
- Introduction of the characters (100 words)
- Summary (200 words)

Assessment Rubrics:

NO	Aspects	Marks
1.	Content-	04
2.	Fluency/Grammatical Accuracy-	03
3.	Creativity-	01
4.	Neatness/Punctuality in Submission-	02

MULTIPLE ASSESSMENT

(A) Article Writing

Describe any one of the following articles in your own words. you should also add pictures to make it creative. (words limit 200- 250)

- (a) My Vision of life in the future.
- (b) Constitution should be changed or not
- (c) Yoga and Mind Healing

Parameters: Creativity, relevance, presentation

(B) Letter writing

On account of Mother's day, write a letter to your Mother expressing your serious concerns about her deteriorating health. (Words limit 100- 120)

Instructions:

- On an A4 size sheet, prepare a chart showing:
- There should be a cover page clearly showing the heading 'Multiple Assessment- 1, Topic, Name, Class and Section. All the other pages must bear student's name, Class and Section at the top. It is mandatory.
- This is to be submitted to your respective English Teacher after summer Break.

हिंदी

पोर्टफोलियो

प्रश्न 1. ग्रीष्मावकाश के दौरान किसी भी सृजनात्मक गतिविधि का विवरण प्रस्तुत करते हुए डायरी लेखन ए-4 साइज शीट पर लिखिए।

प्रश्न 2. विष्णु के दस अवतार माने जाते हैं। विष्णु के अवतार राम और कृष्ण प्रमुख हैं। अन्य अवतारों के बारे में जानकारी प्राप्त करके एक चार्ट बनाइए।

मल्टीपल असेसमेंट

प्रश्न 3. "भाग्य भी उन्हीं का साथ देता है जो कर्म में विश्वास रखते हैं जबकि भाग्य के भरोसे हाथ- पर- हाथ बैठे रहने वाले का विनाश होता है।" इन पंक्तियों के आधार पर उचित शीर्षक देते हुए लघु कथा ए-4 साइज शीट पर लिखिए।

प्रश्न 4. (क) कक्षा नवीं से बारहवीं तक पाठ्यक्रम में कटौती हेतु दिए गए दिशा-निर्देशों के लिए शिक्षा मंत्रालय को पत्र लिखिए।

(ख) आपकी छोटी बहन/ छोटा भाई छात्रावास में रहती/रहता है। उसकी पढ़ाई-लिखाई के संबंध में एक पत्र लिखिए।

प्रश्न 5. आवधिक परीक्षा-1 के पाठ्यधारित मुहावरों को छांटकर लिखिए।

प्रश्न 4 एवं 5 हिंदी कार्य पुस्तिका के व्याकरण के भाग में कीजिए

मूल्यांकन का आधार:

- मौलिकता
- रचनात्मकता
- काल्पनिकता
- यथासमय प्रेषण

MATHEMATICS

PORTFOLIO:

- Uses of surface areas and volumes in daily life (2-3 pages) in A-4 Sheet and write the formulae of surface areas and volumes of solids like cube, cuboid, cylinder, cone, sphere and hemisphere.

MULTIPLE ASSESSMENT:

- Formulas of real numbers, H.C.F & L.C.M, Formation of quadratic polynomial, quadratic formula, conditions for the solutions of pair of linear equations in two variables with graphical interpretation, formulas for n^{th} Term, and sum of n^{th} Term of an A.P. **(A-4 SHEET)**

Activities in Lab Manual

- Activities no- 1.1, 1.2, 1.3, 1.4, 1.5, 1.6, 1.7, 2.1, 3.1 & 3.4

SCIENCE

PORTFOLIO :

Biology:-

- Q1.** Draw a schematic representation of transport and exchange of oxygen and carbon dioxide during transportation of blood in human beings and label on it:
Lung capillaries, Pulmonary artery to lungs, Aorta to body, Pulmonary veins from lungs.
- Q2.** (a) Draw a diagram depicting Human Alimentary Canal and label on it: Gallbladder, Liver, Appendix and Pancreas.
(b) State the roles of Liver and Pancreas.
(c) Name the organ which performs the following functions in humans:
(i) Absorption of digested food (ii) Absorption of water.
- Q3.** Describe an experiment to show that "sunlight is essential for photosynthesis."

Chemistry:-

- Q1.** Answer the following questions from activity 1.3 of NCERT text book on the basis of observations made during the demonstration.
(a) What did you observe happening at the bottom of the test tube in the activity performed?
(b) Did you feel any change in the temperature on touching the bottom of the test tube?
(c) Suggest whether the heat is being released or absorbed during the process of the activity?
(d) What observations tell us that addition of dilute acid to zinc granules leads to a chemical change?
(e) Give examples of one physical and one chemical change from your daily life.
- Q2.** Collect information about corrosion and rancidity that occur in our daily life.

Q3. Complete the following table with the acids and bases used to form a particular salt.

Also give the idea whether the acid /base is strong or weak and the nature of the salt. First one is being done for you.

S. No.	Salt	Acid used	Strong/weak (S/W)	Base used	Strong/weak (S/W)	Predicted nature of the salt-acidic, basic or neutral
1	Sodium chloride	HCl	(S)	NaOH	(S)	Neutral
2	Potassium nitrate					
3	Zinc sulphate					
4	Sodium acetate					
5	Potassium carbonate					

Physics

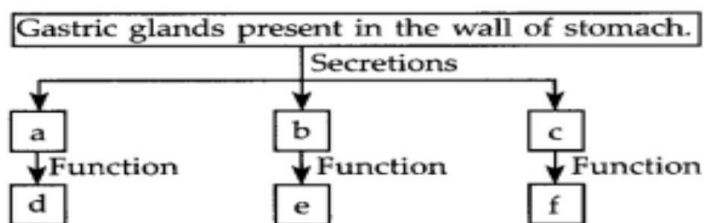
Q1. Make a chart (in A4 sheet) of symbols of some commonly used components in circuit diagrams.

Q2. Draw a closed & open circuit diagram.

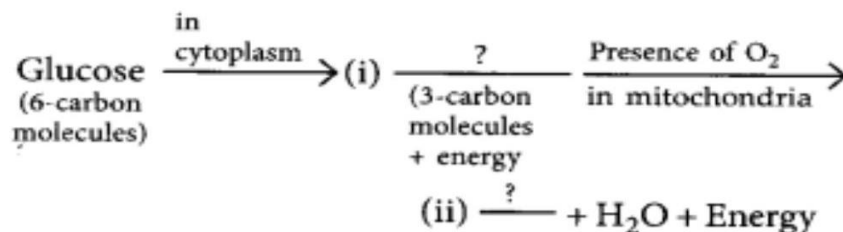
MULTIPLE ASSESSMENT

Biology:-

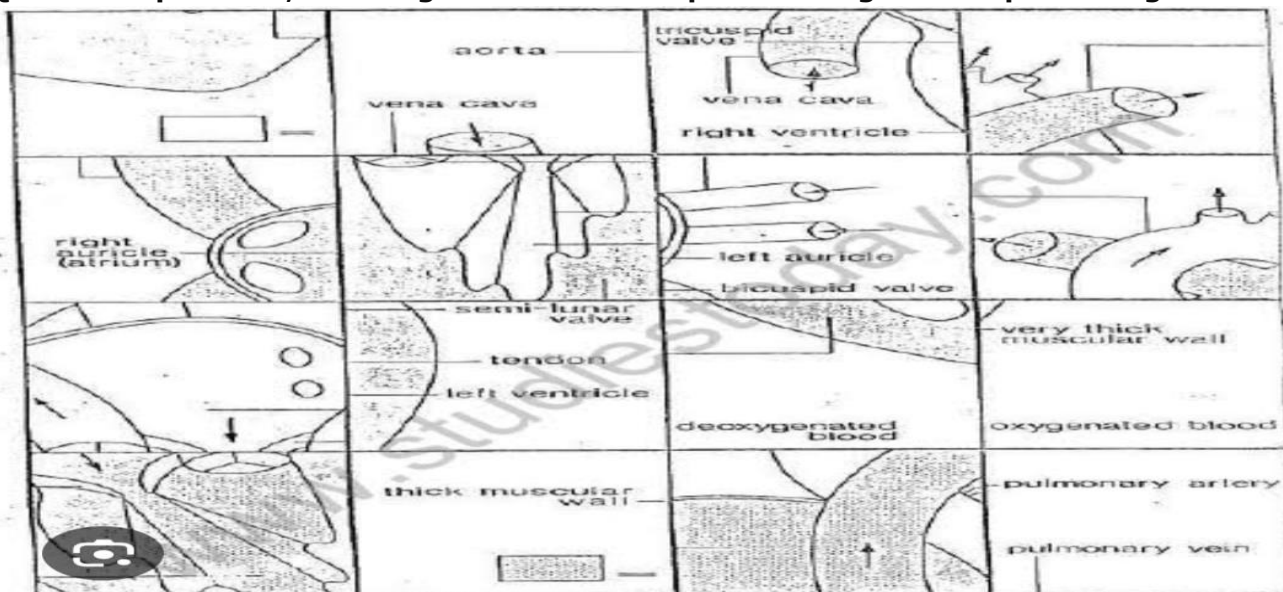
Q1. Complete the following flow chart as per the given instructions.



Q2. Complete the following pathway showing the breakdown of glucose.

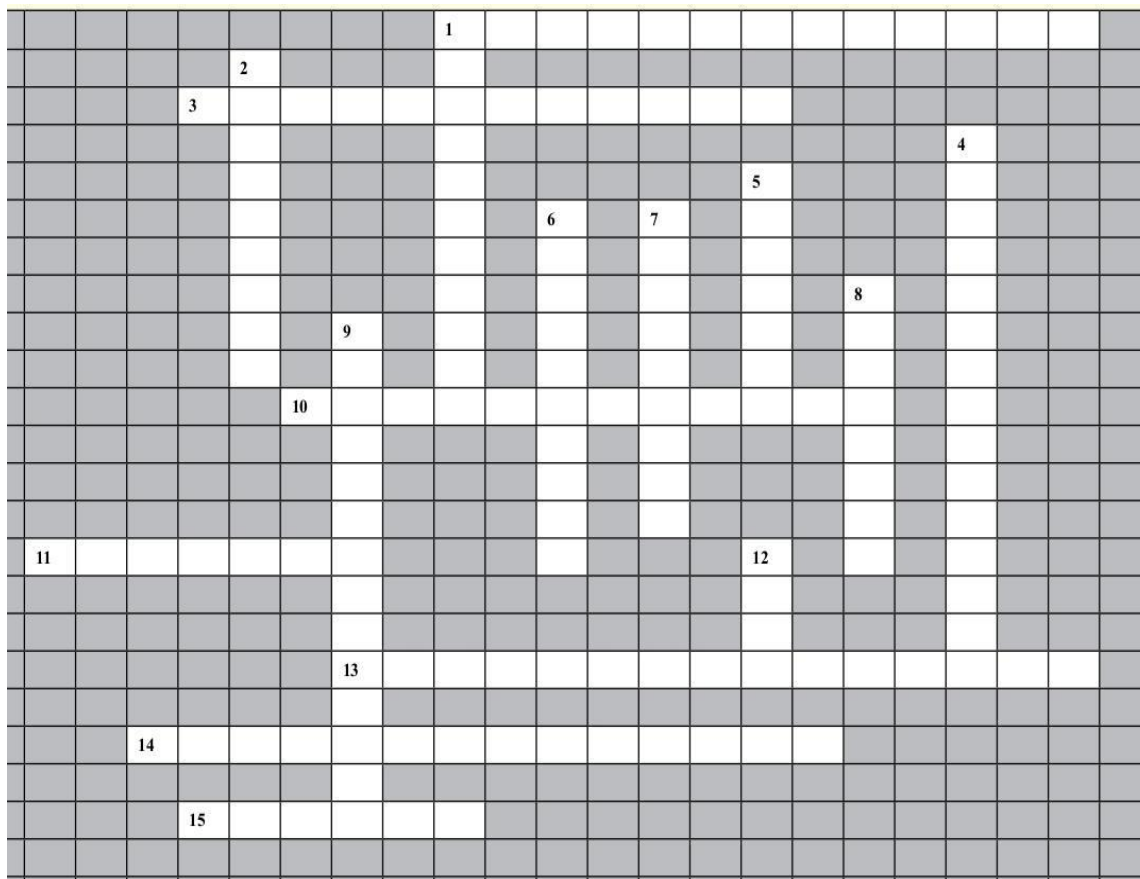


Q3. Take a print out, rearrange and colour the pictures to get a complete image.



Chemistry

Q1. Complete the crossword puzzle.



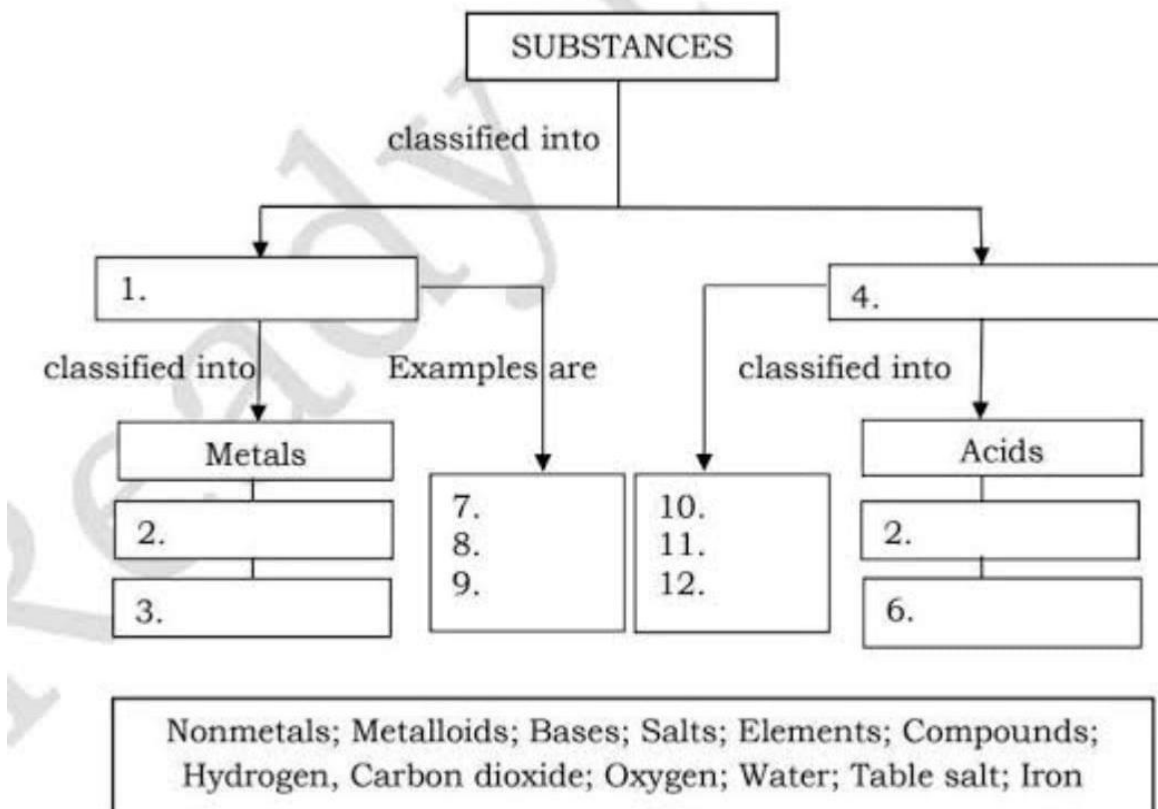
Down

1. Name of process of electrolysis of aqueous sodium chloride. **(2 words)**
2. Change in colour of litmus in basic medium. **(3 words)**
4. Chemical name of washing powder. **(2 words)**
5. Medicine for acidity and indigestion.
6. Common name of sodium hydrogen carbonate. **(2 words)**
7. Change in colour of litmus in acidic medium. **(3 words)**
8. Gas released when an active metal reacts with an acid.
9. Common name of calcium sulphate hemihydrate. **(3 words)**
10. Acids and bases react to produce water and—Across.
 - (a) Gas released when a metal carbonate reacts with an acid. **(2 words)**
 - (b) This indicator gives reddish pink colour in acidic solution. **(2 words)**
11. Mixture of sodium hydrogen carbonate and tartaric acid to make cakes. **(2 words)**
12. Common name of dilute solution of acetic acid.
13. This indicator gives magenta pink colour in alkaline solution.
14. Acids and bases react to give _____ reaction.
15. Plaster of Paris is obtained by heating.

Q2. Write balanced chemical equations for the following word equations:

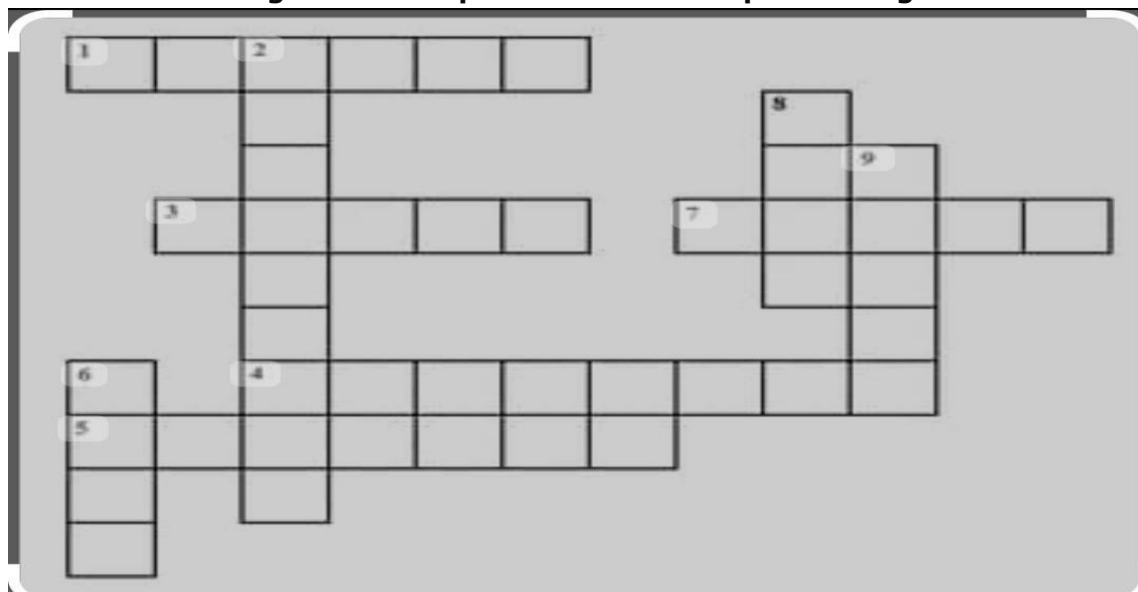
- (a) Calcium hydroxide + Carbon dioxide → Calcium carbonate + Water
- (b) Zinc + Silver nitrate → Zinc nitrate + Silver
- (c) Aluminium + Copper chloride → Aluminium chloride + Copper
- (d) Potassium bromide + Barium iodide → Potassium iodide + Barium bromide
- (e) Zinc carbonate → Zinc oxide + Carbon dioxide

Q3. Complete the following flowchart.



Physics

Q1. Solve the following crossword puzzle with the help of clues given below.



Across

- 1. Makes and breaks the circuit (6)
- 3. A bulb with a broken filament (5)
- 4. The material of the filament of a bulb (8)
- 5. An insulator (7)
- 7. Lights up on getting electrical energy from a cell (5)

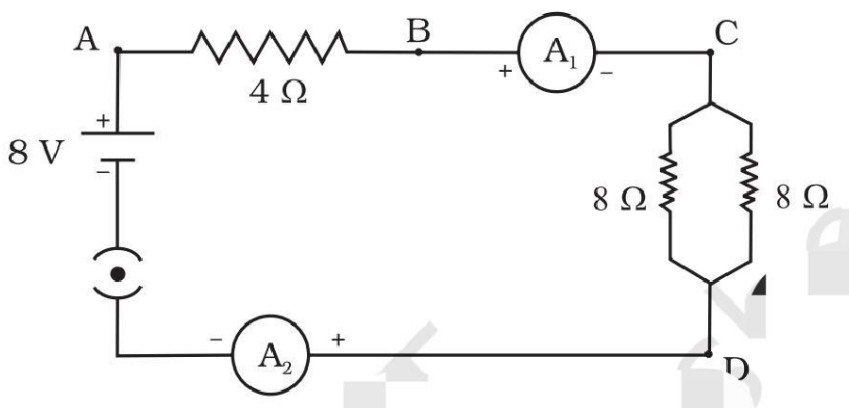
Down

- 2. Materials that do not conduct electricity (9)
- 6. A source of electricity (4)
- 8. The closed path that allows the flow of current (4)
- 9. An inert gas (5)

Q2. Draw a circuit diagram of an electric circuit containing a cell, a key, an ammeter, a resistor of $2\ \Omega$ in series with a combination of two resistors ($4\ \Omega$ each) in parallel and a voltmeter across the parallel combination. Will the potential difference across the $2\ \Omega$ resistor be the same as that across the parallel combination of $4\ \Omega$ resistors? Give reason.

Q3. Find out the following in the electric circuit given in Figure.

- (a) Effective resistance of two $8\ \Omega$ resistors in the combination
- (b) Current flowing through $4\ \Omega$ resistor
- (c) Potential difference across $4\ \Omega$ resistance
- (d) Power dissipated in $4\ \Omega$ resistor
- (e) Difference in ammeter readings, if any.



- **Complete the following task in A4 sheets only**
- **Make a beautiful Cover page for the whole task.**
- **Make diagrams with pencil or coloured pencils wherever necessary.**

SOCIAL SCIENCE

PORTFOLIO

(a) Make a project on water conservation

OR

(b) Make a project on Green revolution (atleast 20 pages)

MULTIPLE ASSESSMENT

(a) Draw an Indian map by your hand and mention states and capital on it (on chart paper)

(b) Revise all the PT syllabus for PT exam.

SEA

(a) Fill the maps of chapter 1 and 2 of geography on the map book.

Parameters of assessment: - Creativity and presentation, content accuracy, timely submission.

COMPUTER APPLICATIONS

Solve the given MCQs in Computer Notebook:-

- Q1. The Internet consists of:**
(a) FTP (b) WWW (c) Telnet (d) All of these
- Q2. Hypertext refers to a digital text which consists of:**
(a) Audio/Video/Images (b) Hypertext (c) Hyperlinks (d) All of these
- Q3. In URL, https://www.cbse.gov.in/cbsenew/contact-us.html, which component identifies the protocol or type of the server?**
(a) https (b) www.cbse.gov.in (c) .html (d) None of these
- Q4. In URL, https://www.cbse.gov.in/cbsenew/contact-us.html, which component identifies the website?**
(a) https (b) www.cbse.gov.in (c) html (d) None of these
- Q5. An email can be sent via:**
(a) PC (b) Tablet (c). Smart Phone (d) All of these
- Q6. _____ field of email-compose box allows to send same message to multiple recipients without getting them know about other recipients.**
(a) Cc (b) To (c) Bcc (d) Message
- Q7. The protocol used to transfer files across various servers over the Internet is called _____.**
(a) STP (b) FTP (c) SSH (d) HTTP
- Q8. Buying goods by placing orders online is called _____.**
(a) E-Shopping (b) E-Commerce (c) E -Buying (d) All of these
- Q9. Which of the following is the major reason cited for e-shopping's popularity?**
(a) Unique offers (b) convenience (c) price (d) gift
- Q10. Despite other facilities, the company has banned the use of social networking sites during the office hours. Which of the following sites may be banned?**
(a) Facebook.com (b) Instagram.com (c) Twitter (d) All of these

Prepare a project file:-

- First Page: Make an Introduction page.
- Second Page: Make an Index page.
- Third Page: Write the definition of Computer and draw a Computer system diagram.
- Fourth Page: Write about HTML.
- Fifth Page: Draw Structure of an HTML Document [Take Help: Book, PageNo.-142, Listing 1]